

## MAPPING AND EVALUATING URBAN DENSITY PATTERNS IN MOSCOW, RUSSIA

K. Choudhary<sup>1</sup>, M.S. Boori<sup>1,2,4</sup>, A. Kupriyanov<sup>1,3</sup>

<sup>1</sup> Samara National Research University, Samara, Russia,

<sup>2</sup> American Sentinel University, Denver, Colorado, USA,

<sup>3</sup> Image Processing Systems Institute – Branch of the Federal Scientific Research Centre  
“Crystallography and Photonics” of Russian Academy of Sciences, Samara, Russia,

<sup>4</sup> Bonn University, Bonn, Germany

### Abstract

The defense of the notion of ‘compact city’ as a strategy to reduce urban sprawl to support greater utilization of existing infrastructure and services in more compact areas and to improve the connectivity of employment hubs is actively discussed in urban research. Using the urban residential density as a surrogate measure for urban compactness, this paper empirically examines a cadaster database that contains details of every property with a view of capturing changes in urban residential density patterns across Moscow using geospatial techniques. The policy of densification in chase of a more compact city has produced mixed results. Findings of this study signal that the urban densities across the buffer zones around Moscow city are significantly different. The Landsat images from 1995, 2005 and 2016 are classified based on the maximum likelihood to expand the land use/cover maps and identify the land cover. Then, the area coverage for all the land use/cover types at different points in time is combined with the distance from the city center. After that, urbanization densities from the city center toward the outskirts for every 1-km distance from 1 to 60 km are calculated. The city density on the distance of 1 to 35 km is found to be very high in the years 1995 to 2016. As usual, the population, traffic conditions, industrialization and government policy are the major factors that influenced the urban expansion.

**Keywords:** density, compact city, land use/cover, buffer zones.

**Citation:** Choudhary K, Boori MS, Kupriyanov A. Mapping and evaluating urban density patterns in Moscow, Russia. *Computer Optics* 2017; 41(4): 528-534. DOI: 10.18287/2412-6179-2017-41-4-528-534.

**Acknowledgments:** This work was financially supported by the Russian Science Foundation (RSF), grant no. 14-31-00014 “Establishment of a Laboratory of Advanced Technology for Earth Remote Sensing”.

### Introduction

Land use planning is an indiscernible part of the viability and livability of a metropolitan area because it affects decisions about where and how we live. Over the last few decades local councils and government agencies in Moscow have been continually developing land use planning strategies to contain and manage urban growth [1]. The general purpose of this shift is to reduce urban sprawl and support utilization of existing infrastructure and services in more situated areas [2]. Over all to this shift, suburbanization was heralded for hortative economic growth for generating employment with strong multiplier effects and for the development of infrastructure in urban fringe. Moscow is one of the most important historical, cultural, industrial and commercial cities in Russia. It has a booming economy with moveable growth. During the last two decades growth in industry, population and economic activities has been strongly concentrated in Moscow region. Moscow became the administrative center and took center stage in national development. Major development and supporting policy variation were undertaken and within two decades there were major transformation landscape changes in Moscow region.

In the past, few years valuable research has been carried out on the use of GIS (Geographical Information Systems) and Satellite data for measuring city growth and sprawl development patterns [3, 4]. Remote sensing

provides spatially consistent data that cover large areas with both high spatial detail and temporal frequency. Newly, remote sensing has been used in combination with Global Positioning Systems and GIS to assess land cover change more effectively than by remote sensing data [5]. The objective of this study is to determine the spatial patterns of urban growth. The growth has been systematically mapped, monitored and accurately assessed using satellite images with conventional ground data. Mapping provides a picture of where growth is occurring helps to identify the natural and environmental resources.

In this research we will examine the hypothesis that the current compact city model is likely to increase the residential lodgment density in inner suburbs because the compact city policy encourages the development of multi-level constructions in these areas [6, 7]. To capture the change in urban density two main sets of techniques are employed. First a buffer analysis is applied to compute zonal statistics and test the difference in residential densities around the Moscow center. Second a metropolitan scale a spatial autocorrelation measure is used to calculate the degree of spatial clustering of dwellings. The spatial analysis applied in this study uses a 1 km by 1 km grid to explore the changes in urban residential density in Moscow. This represents the spatial variability and the degree of densification within the Urban Growth Boundary [8].

**Study area**

Moscow city, an important historical, cultural, social and economic center in Russian Federation was selected for this study (Fig. 1). The latitude of the city is 55° 45' 7" N and longitude is 37° 36' 56" E. The population of Moscow 13,197,596 permanent residents within city limits, 15,300,000 estimated totals within city limits, 17,900,000 urban areas and the total population in Moscow metropole areas is 20,561,194. This gives the city proper a very high population density of 4,900 people per square kilometer.

The climate of Moscow region is humid continental, short but warm summers and long cold winters. The average temperature is 3.5 °C (38.3 °F) to 5.5 °C (41.9 °F). The coldest months are January and February average temperature of -9 °C (16 °F) in the west and -12 °C (10 °F) in the east. The minimum temperature is -54 °C (-65 °F). Here are more than three hundred rivers in Moscow region and most rivers belong to the basin of the Volga. Which itself only crosses a small part in the north of Moscow region. They are mostly fed by melting snow and the flood falls on April-May. The water level is low in summer and increases only with heavy rain. The river freezes over from late November until April.

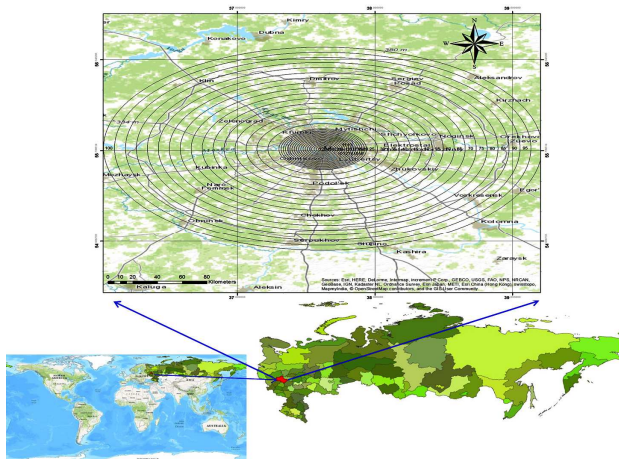


Fig. 1 Location map of the study area in Moscow Region, Russia

**Data and methods**

Urban density mapping is based on four core spatial digital databases of Moscow. The State digital property layers for September 1995, October 2005 and April 2016. The layers contain details for each property for Moscow in Russia. The specific satellite images used were Landsat TM for 1995, Landsat ETM+ for 2000 and Landsat 8 for 2016, an image captured by different types of sensor [9, 10]. So, three different date satellite images were used. The spatial resolution is 30 m for band numbers 1 to 5 for all sensors. All images were from the USGS website. All images have the same spatial resolution for specific bands; one simply goes through maximum likelihood classification. In this study, at least 16 years' time difference was used so that sufficient land use change information can be find out.

The mapping has been undertaken using a grid format with 1 – 1 km grid cell. It was centered on the centroid of

the Moscow and the grid cells were then spread out to cover the total area [11, 12]. A number of data preprocessing were applied to process the data such as projection, rectification, registration, band combination and interpretation. Than complete data analysis as (1) Relates to calculation of urban density, which is measured as the number of residential dwellings per square kilometer; (2) applies a buffer analysis to evaluate difference between zones from the Moscow center; and (3) quantifies the degree of spatial clustering of dwelling density patterns [13, 14].

**Maps processing**

The image obtained as standard products were geometrically and radio metrically corrected by data providers. All three images were geometrically corrected up to the orthorectified level. Images from different sensors have different spatial resolutions. In this research we preferred to retain the spatial detail, original pixel size and value of each image for specific bands [15, 16]. The images were kept without changing their pixel sizes despite the possible varying accuracy level of classification with the different spatial, spectral and radiometric resolutions. All of the images were classified by creating accurate polygons as training areas for introducing ideal classes for each image by using the maximum likelihood classification method. To create a closer correspondence between the maps produced, the classification was done by considering following classes: agriculture, barren land, forest, settlements, scrubland, water body and wetland (Table 1).

Table 1. Land use classes definitions

LULC Classes	Definition of Land Use Classes
Agricultural	Cultivated areas, crop lands, grass lands, vegetables, fruits etc.
Barren land	This contains open lands mostly barren but also small vegetation.
Forest	Small trees and shrub vegetation area except for vegetation.
Scrubland	Scrub is a plant community describe by vegetation shrubs, often also including grasses and herbs.
Settlements	Includes construction activities along the coastal dunes as well as sporadic houses within the local village and some governmental buildings.
Water body	All the water within land mainly river, ponds, lakes etc.
Wetland	A wetland is a land area with standing water and low soil fertility.

Post-classification refinement was used to improve the fraction with a complex combination of features (buildings, roads, grass, soil, trees and water), mixed pixels and the salt effect are common problem when we were using medium spatial resolution data [17, 18]. This research is focused on urban settlements and urban vegetation coverage measurement and their interactions. Rangeland is considered to be both forest area and non-urban vegetation. Water bodies have very limited cover-

age and along with barren land are not discussed further in the results and discussion.

After classification multi-buffer rings are created for every 1 km distance from 1 to 60 from the city center to the outside. After that, the intersection with classified maps for all three dates is featured. All class areas were measured for 1 to 60 km distance and derive density according to [19, 20]:

$$\text{Urban density} = \frac{\text{Settlement area/Ring}}{\text{Total ring area}}.$$

#### Urban growth rate

In order to evaluate the spatial distribution of urban expansion intensity, we adapted an indicator called annual urban growth rate (AGR) for evaluating the urbanization speed of unit area [21]. AGR is defined as:

$$\text{AGR} = \frac{UA_{n+1} - UA_i}{nTA_{n+1}} \times 100\%.$$

Where  $TA_{n+1}$  is the total land area of the target unit to be calculated at the time point of  $I + n$ ,  $UA_{n+1}$  and  $UA_i$  the urban area or built – up area in the target unit at times  $i + n$  and  $i$ , respectively and  $n$  is the interval of the calculating period. Usually, the target calculating unit is set to the administrative district so as to link with administration or economic statistics [22]. In this research, we preferred the geographical gridding unit since the administrative borders have been changed so frequently in this city. The maps were therefore gridded as  $1 \times 1$  km units and the annual urban growth rates of each unit were then calculated. At last, the grid-based annual urban growth rates were mapped to evaluate the spatial features of the expansion.

#### Results and discussion

Urban residential density mapping has been conducted on a grid with a 1 to 1 km grid cell. The grid was generated for the Moscow area. The density maps in Fig. 2, a number of observations about spatial patterns of dwelling density can be made. First, dwelling density across the Moscow metropolitan area tends to vary substantially. Due to historical and geographical factors, eastern parts of Moscow are more densely populated than its counterparts the western suburbs. More than 10 training sites have been selected for each class so that classification accuracy is high. The high level of accuracy observed in this study could be the result of the classification since seven classes were used. Furthermore, in all buffer rings only the urban area was calculated in place of the whole ring. After that producing completed land use maps, the total coverage of different classes was determined.

Using this information, we calculated the water, forest, agricultural, barren land and settlements area per capita for all the study years (Table 2). There are several major trends explicit in the changes of land cover that are consistent over the period 1995 to 2016. The settlement area increased rapidly and there was a marked decrease in other classes. The categories in the land cover maps were

agriculture, barren land, forest, scrubland, settlements, water body and wetland. Some interesting patterns in the distribution of dwellings across different buffer zones can be noted in Fig. 1. As expected the settlements/urban density in Moscow tends to downfall outward from the city center. According to the land use maps produced for the urban area of Moscow was expanded from 3898.31 km<sup>2</sup> in 1995 to 4361.75 km<sup>2</sup> in 2005 and finally reaches to 5852.00 km<sup>2</sup> in 2016 (Fig. 3).

The urban area has been continuously increasing 8.34% of the study area in 1995 to 9.33% in 2005 and finally 12.51% in 2016. The other classes' area of agriculture land decreased from 29.24% in 1995 and 13.91% in 2005. The area of forest has first increased from 45.19% to 52.75% from 1995 to 2005 and later on reduced 42.54% in 2016. In contrast, the area of water body was 0.87% in 1995, 0.92% in 2005 and 0.96% in 2016. Barren land has first increased 45.19% in 1995 to 10.09% in 2005, later on decreased 6.40% in 2016. Other classes such as scrubland first increased then decreased and wetland continuously decreased (Table. 2).

Fig. 2 represents 1.58% growth in urban area over a period of two decades. In the first decade, urban growth was 1.06%. In 2005 to 2016 (5852 km<sup>2</sup>), the average rate of expanse was 2.31% it was increase (Table. 3).

City density patterns around the Moscow center were also examined to ascertain whether different zones have represented different densities. Fig. 5 shows 60 buffer ring zones from 1 to 60 km distance. It has been argued that the first five zones represent the areas that are within walking distance from the city center. High density development has been supported by the government to encourage people to walk to train stations and other destinations such as shopping centers. This policy has in part been pursued to encourage active transport as part of a healthy lifestyle. WE find that in the city center urban density was more than 90% for the last three decades. In 1995, it was reduced dramatically around 60% on the distance of 5 km from the city center, less than 10% on 15 km and 0% after 40 km. When we were comparing 1995 and 2016 on the distances of 5, 8, 15, and 20 and 30 km the city density has been increase very high. If we compare only 1995 and 2005 on the distances of 8, 15, and 19 km the city density was highly increased. From 2005 to 2016 on the distances of 4 and 30 km density was increased. On the distance of 60 km the city density was 0% in the last three decades (Fig. 4).

Fig. 5 shows, in 1995 the city center urban density was more than 90%, the share of agriculture was 10% and forest and water was 0%. Till 4 km distance from the center the urban area continuously reduces and agriculture has continuously increased 45%. Later on both have small variation and 7 to 16 km distance both classes were reduced. Both classes were stable or vary a little and after 40 km distance both classes have 0% density. The class forest has 0% density from 1 to 5 km and from 30 to 60 km distance. It has less than 10% density from 5 to 40 km distance. The water class has almost close to 0% density in all distances.

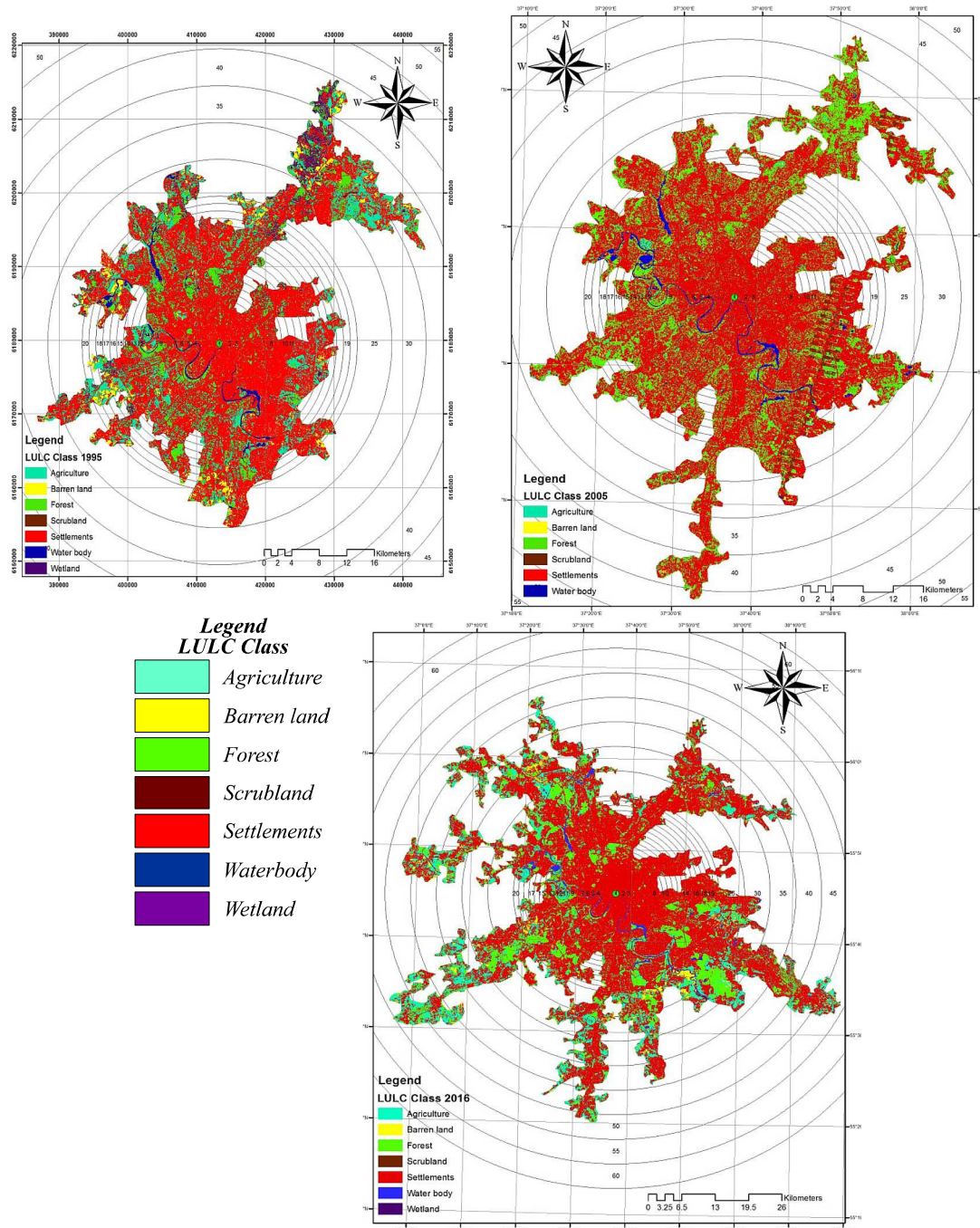


Fig. 2. Multi-buffer ring zones around the city center of Moscow for 1995, 2005 and 2016 maps

Table 2. Moscow Land use/cover classes for 1995, 2005 and 2016

Class	1995		2005		2016	
	Area KmSq	%	Area KmSq	%	Area KmSq	%
Agriculture	13673.00	29.24	6504.00	13.91	13403.62	28.66
Barren land	3802.63	8.13	4717.74	10.09	2993.18	6.40
Forest	21135.18	45.19	24671.31	52.75	19896.64	42.54
Scrubland	1268.97	2.71	3791.82	8.11	3377.49	7.22
Settlements	3898.31	8.34	4361.75	9.33	5852.00	12.51
Water body	408.96	0.87	430.13	0.92	449.45	0.96
Wetland	2580.57	5.52	2291.37	4.90	795.75	1.70
Total	46768.12	100.00	46768.12	100.00	46768.12	100.00

Table 3. Urban growth rate km<sup>2</sup> of Moscow

Year	1995-2005	2005-2016	1995-2016	Per year
AGR (km <sup>2</sup> )	1.06	2.31	1.58	0.075

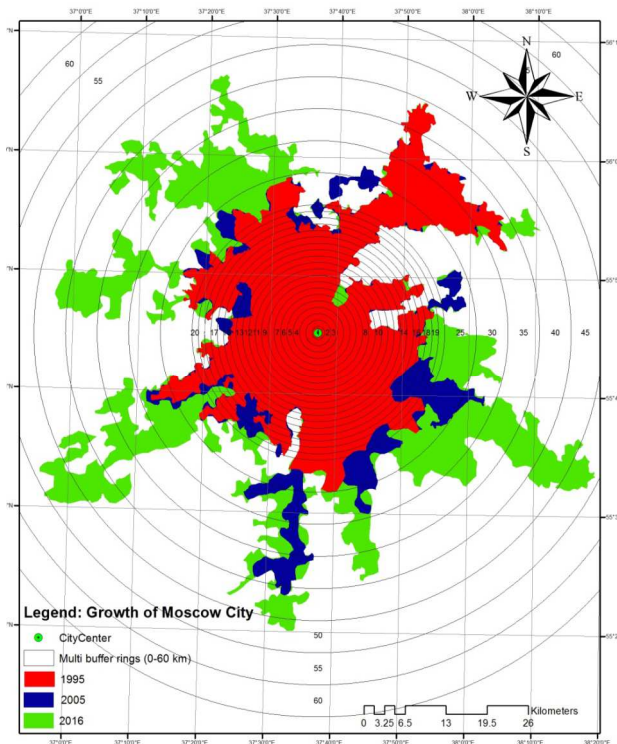


Fig. 3. Growth of Moscow in 1995, 2005 and 2016

In 2005, density of urban area and agriculture is the same like 1995 till distance of 9 km. Later on urbanization reduces continuously. In 2005, agriculture has 10% density on 10 km and 10% density 7 to 18 km distance. Water class was very less on maximum distance and has 0% density (Fig. 5). In 2016, in the city center urban density was more than 96% and other classes as agriculture, forest, wetland water etc. were less than 5%. From 1 to 5 km distance urban area reduce till 75% but agriculture increase and reaches up to 24% and later on reduces around 10 to 15% in all distance. Urban density again increases after 6 to 10 km and later on reduces continuously. Forest is variant on 10% and versa with agriculture class (Fig. 5). The census data indicated that the main phase of population growth in Moscow occurred between 1995 and 2001.

The main causes of this growth were a high birth rate, rural to city migration and the merging of nearby village with the city as it development. Urban expansion and subsequent landscape changes are governed by geographical and socioeconomic factors such as population growth, policy and economic development. In cases, urban expansion and associated land use changes resulted from a combination of these factors. For example, socioeconomic policy can strongly affect urban expansion and under the changes driven by urban expansion, the land use patterns of the urban outskirts are altered or adjusted in pursuit of high economic returns. Even though it is dif-

icult to clarify the influence of these factors in these changes, their influence is examined by analyzing the relationships between developed area and socioeconomic factors such as population, industrialization, traffic conditions and infrastructure.

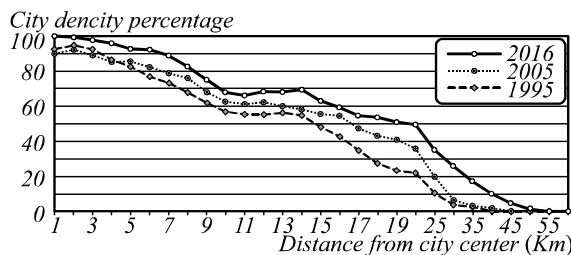
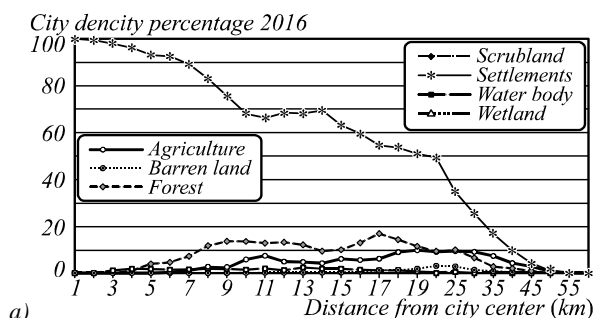
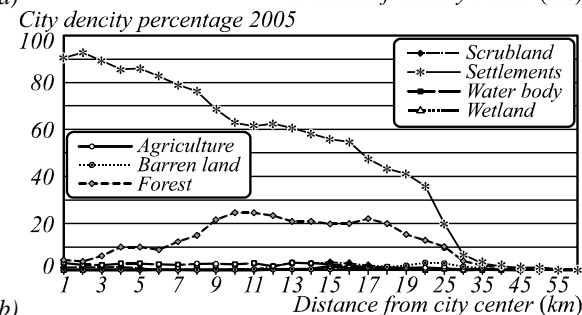


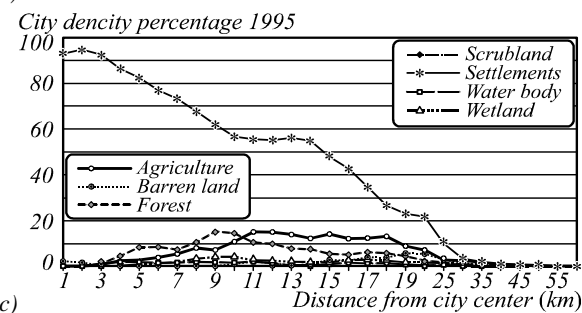
Fig. 4. Moscow density from 1 to 60 km distance for 1995, 2005 and 2016



a)



b)



c)

Fig. 5. Moscow land cover class density from 1 to 60 km distance for the year (a) 2016, (b) 2005 and (c) 1995

Conclusion

The empirical investigation of urban residential density patterns presented in this paper offers new insights into the spatial implication of policy changes. Moreover it provides evidence to assess the difference between rhetoric and reality in terms of achieving higher residential densities around the designated activity centers. Analysis of the database that contains details of every property has the potential to aide urban planners and policy practitioners in evaluations of urban consolidation policies. In

comparing 1995 and 2016 on distances of 5, 8, 15, 20 and 30 km the city density was increased very high. In 1995 to 2005 on the distances of 8, 15 and 19 km the city density has been highly increased. From 2005 to 2016 on the distances of 3 and 35 km density has increased and on 55 km distance the city density was 0% in the last two decades. In Moscow urban land expansion has largely been shaped by the tract such as mountains and lakes and social factors such as population growth, migration and economic development. All open spaces such as vegetation cover were destroyed and converted to urban areas. This study demonstrated that development occurred mainly in available open spaces in the city lands between the buildings. This will form the basis of future research. The spatial representation of change in residential dwelling density at a metropolitan level was the prime focus of this paper. Further research into the application of modeling techniques is therefore called upon to identify the factors that produce spatial mutability in density patterns with the ability to model the likely impacts of policy change.

### References

- [1] Anselin L. Spatial econometrics: Methods and models. Dordrecht: Kluwer Academic Publishers; 1988. ISBN: 978-90-481-8311-1.
- [2] Beed CS. Melbourne's development and planning. Melbourne: Clewara Press; 1981. ISBN: 978-0-959416619.
- [3] Choudhary K, Boori MS, Kupriyanov A. Spatial modelling for natural and environmental vulnerability through remote sensing and GIS in Astrakhan, Russia. The Egyptian Journal of Remote Sensing and Space Science 2017 [In Press]. DOI: 10.1016/j.ejrs.2017.05.003.
- [4] Burton E. The compact city: Just or just compact? A preliminary analysis. Urban Studies 2000, 37(11), 1969-2001. DOI: 10.1080/00420980050162184.
- [5] Al-Awadhi T. Monitoring and modeling urban expansion using GIS & RS: Case study from Muscat, Oman. In: Proceedings of Urban Remote Sensing Joint Event 2007; 1-5. DOI: 10.1109/URS.2007.371790.
- [6] Alphan H. Land-use change and urbanization in Adana, Turkey. Land Degradation & Development 2003; 14(6): 575-586. DOI: 10.1002/ldr.581.
- [7] Anderson JR, Hardey E, Roach J, Witmer RE. A land use and land cover classification system for use with remote sensor data. U.S. Geological Survey Professional Paper 1976; 964: 1-28.
- [8] Barnsley MJ, Barr SJ. Inferring urban land use from satellite sensor images using Kernel-based spatial reclassification. Photogrammetric Engineering & Remote Sensing 1996; 62(8): 949-958.
- [9] Choudhary K, Boori MS, Kupriyanov A. Landscape analysis through remote sensing and GIS techniques: A case study of Astrakhan, Russia. Proc SPIE 2017; 10225: 102251U. DOI: 10.1117/12.2266245.
- [10] Lu Q, Weng D. Urban classification using full spectral information of Landsat ETM+ imagery in Marion County, Indiana. Photogrammetric Engineering & Remote Sensing 2005; 71(11): 1275-1284. DOI: 10.14358/PERS.71.11.1275.
- [11] Bertaud A, Malpezzi S. The spatial distribution of population in 35 world cities: The role of markets planning and topography. Madison, WI: Centre of Urban Land Economics Research; 1999.
- [12] Saboori B, Sulaiman J, Mohd S. Economic growth and CO<sub>2</sub> emission in Malaysia: A cointegration analysis of the environmental Kuznets curve. Energy Policy 2012; 51: 184-191. DOI: 10.1016/j.enpol.2012.08.065.
- [13] Salari HE, Hengsbach T, Henke C, Kopec J, Kozinski M, Sumpelmann P. Detection and analysis of land use changes and growth of Hanoi using remote sensing methods and Landsat satellite images. Dortmund: Technische University; 2013.
- [14] Stefanov WL, Ramsey MS, Christensen PR. Monitoring urban land cover change: An expert system approach to land cover classification of semiarid to arid urban centers. Remote Sensing of Environment 2001; 77: 173-185. DOI: 10.1016/S0034-4257(01)00204-8.
- [15] Thinh NX. Contemporary spatial analysis and simulation of the settlement development of the Dresden city region. Proceedings of 17th International Conference Informatics for Environmental Protection, Cottbus, Part 1: Concepts and Methods 2003; 253-261.
- [16] Thinh NX, Arlt G, Heber B, Hennemersdorf J, Lehmann I (2013) Pin-pointing sustainable urban land-use structures with the aid of GIS and cluster analysis. 15th International Symposium Informatics for Environmental Protection, Zürich 2001: 559-567.
- [17] Weng QH. Land use change analysis in the Zhujiang Delta of China using satellite remote sensing, GIS and stochastic modelling. J Environ Manage 2002; 64(3): 273-284. DOI: 10.1006/jema.2001.0509.
- [18] Boori MS, Choudhary K, Kupriyanov A, Sugimoto A, Eyer M. Natural and Environmental vulnerability analysis through remote sensing and GIS techniques: A case study of Indigirka River basin, Eastern Siberia, Russia. Proc SPIE 2016; 10005: 100050U. DOI: 10.1117/12.2240917.
- [19] Wilson EH, Hurd JD, Civco DL, Prisloe MP, Arnold C. Development of a geospatial model to quantify, describe and map urban growth. Remote Sens Environ 2003; 86(3): 275-285. DOI: 10.1016/S0034-4257(03)00074-9.
- [20] Wu KY, Ye ZY, Qi, ZF, Zhang H. Impacts of land use/land cover change and socioeconomic development on regional ecosystem services: the case of fast-growing Hangzhou metropolitan area, China. Cities 2013; 31: 276-284. DOI: 10.1016/j.cities.2012.08.003.
- [21] Xiao J, Shen Y, Ge J, Tateishi R, Tand C, Liang Y, Huang Z. Evaluation urban expansion and land use change in Shijiazhuang, China, by using GIS and remote sensing. Landsc Urban Plan 2006; 75(1-2): 69-80. DOI: 10.1016/j.landurbplan.2004.12.005.
- [22] Yagoub M. Monitoring of urban growth of a desert city through remote sensing: Al-Ain, UAE, between 1976 and 2000. Int J Remote Sens 2004; 25(6): 1063-1076. DOI: 10.1080/0143116031000156792.
- [23] Choudhary K, Boori MS, Kupriyanov A, Kovelskiy V. Analysis of urban spatio-temporal land use/cover change and expansion with their driving force through remote sensing and GIS in Samara city, Russia. DOI: 10.1201/b19934-70. In Book: Hong SH, Seo J, Moon K, eds. Advanced materials, mechanical and structural engineering. London, UK: Taylor & Francis Group; 2016: 355-358. ISBN: 978-1-138-02908-8.

### Authors' information

**Komal Choudhary** has completed her Bachelor's and Master's degrees in Geography from the University of Rajasthan, India in 2003 and 2005, respectively. She also completed Bachelor's degree of Education in 2007 from the University of Rajasthan, India. She has more than 15 international publications including Books on Vulnerability, Risk Assessment and Climate Change. Her prime research interest is "Sustainable Development Studies through Multi Criteria Approach". She has to her credit an illustrious experience in teaching and other administrative responsibilities spanning over a decade and has served in various capacities like Principal, Faculty Development and Controller of Examinations. Komal brings with herself a vast experience in curriculum design, research guidance and innovative teaching. E-mail: [komal.kc06@gmail.com](mailto:komal.kc06@gmail.com).

Prof. **Dr. Mukesh Singh Boori** (b. 1980) is Senior Scientist in Samara University Russia (03/2015–Present, funded by Russian Federation), Visiting Professor in JKL University India (10/2016–11/2016), Visiting Senior Scientist at University of Bonn, Germany (05/2016–07/2016), Visiting Scientist/Professor at Hokkaido University Japan (12/2015–02/2016) and Adjunct Professor in American Sentinel University Colorado USA (07/2015–Present). He was involved in European Union Project as well as Visiting Assistant Professor in Palacky University Olomouc, Czech Republic (04/2013–06/2015), Ruhr University Bochum Germany (09/2014–12/2014) and University of Leicester, UK (Honorary Fellow 2014) funded by European Union; at the same time he was Assistant Professor in JECRC University India (01/2013–06/2015). He was Scientist in Satellite Climate Studies Branch (NOAA/NASA) selected by National Research Council (NRC) Central Govt. of USA Washington DC. During that time he completed his Postdoc from University of Maryland USA (10/2012). He has done PhD (*EIA & Management of Natural Resources*) from Federal University – RN (UFRN) Natal –RN Brazil (08/2011) funded by Brazil–Italy Govt. fellowship. He has done Predoc (*Earth & Environmental Science*) from Katholieke University Leuven Belgium (08/2008) selected by Ministry of Human Resource Development (MHRD) New Delhi India and funded by Govt. of Belgium. He has done MSc (*Remote sensing & GIS*) from MDS University Ajmer (2004) and BSc (*Bio-group*) from University of Rajasthan Jaipur India (2002). In early career he was scientist in JSAC/ISRO (2006–2007) and before that Lecturer (PG) at MDS University Ajmer (2005–2007 Sessions). He received international awards/fellowships from UK, USA, Brazil, Italy, Indonesia, Belgium, Czech Republic, Germany, Russia, China, Japan and India. He known Six Language and visit four Continents for Awards, Meetings, Trainings, Field Trips, Seminars and Conferences. He is an active Organizing Committee Member in Earth & Space Science Conferences, Co-Chaired a session and gave Conference Opening Ceremony Speech as Reynold Speaker (08/2012) Chicago USA and (05/2017) Barcelona Spain. He is editor and member of more than 10 International Scientific Societies/Journals/Committees related to Earth & Space Science; which include organize conferences. His prime research interest is "EIA and Management of Natural Resources through Remote Sensing & GIS Technology". He has more than 100 Peer-reviewed International Publications including Books as a first author on Vulnerability, Risk Assessment and Climate Change. E-mail: [msboori@gmail.com](mailto:msboori@gmail.com).

Prof. **Alexander Victorovich Kupriyanov** (born 1978) graduated with honors from Samara State Aerospace University (SSAU) (2001). Candidate's degree in Technical Sciences (2004) and Doctor of Engineering Science (2013). Currently, Senior Researcher at the Image Processing Systems Institute, Russian Academy of Sciences, and part-time position as Associate Professor at SSAU's sub-department of Technical Cybernetics. Areas of interest: digital signals and image processing, pattern recognition and artificial intelligence, nanoscale image analysis and understanding, bio-medical imaging and analysis. More than 90 scientific papers, including 42 published articles and 2 monographs. E-mail: [akupr@smr.ru](mailto:akupr@smr.ru).

---

*Code of State Categories Scientific and Technical Information (in Russian – GRNTI): 29.31.15, 29.33.43, 20.53.23.  
Received March 19, 2017. The final version – June 28, 2017.*

---